

It's recommended to use a soft cloth or gloves when handling the fixture.

Wiring Instructions

1. Attach universal crossbar to Junction box, aligning holes in regard to fire plate screw holes and fixture direction.
2. Mark drywall anchor locations and install flush with ceiling surface.
3. Screw fire plate onto universal crossbar.
4. Use drywall screws to secure the edges of the fire plate onto the ceiling anchors.
5. Tuck the connected wires into the fire plate.
6. Connect positive supply wire (typically black or the smooth, unmarked side of the two-conductor cord) to positive fixture lead with appropriately sized twist on connector.
7. Connect negative supply wire (typically white or the ribbed, marked side of the two-conductor cord) to negative fixture lead.
8. Please refer to the grounding instructions to complete all electrical connections.
9. Insert C hooks into holes at side of fireplate. With the help of another person suspend canopy from C hooks.

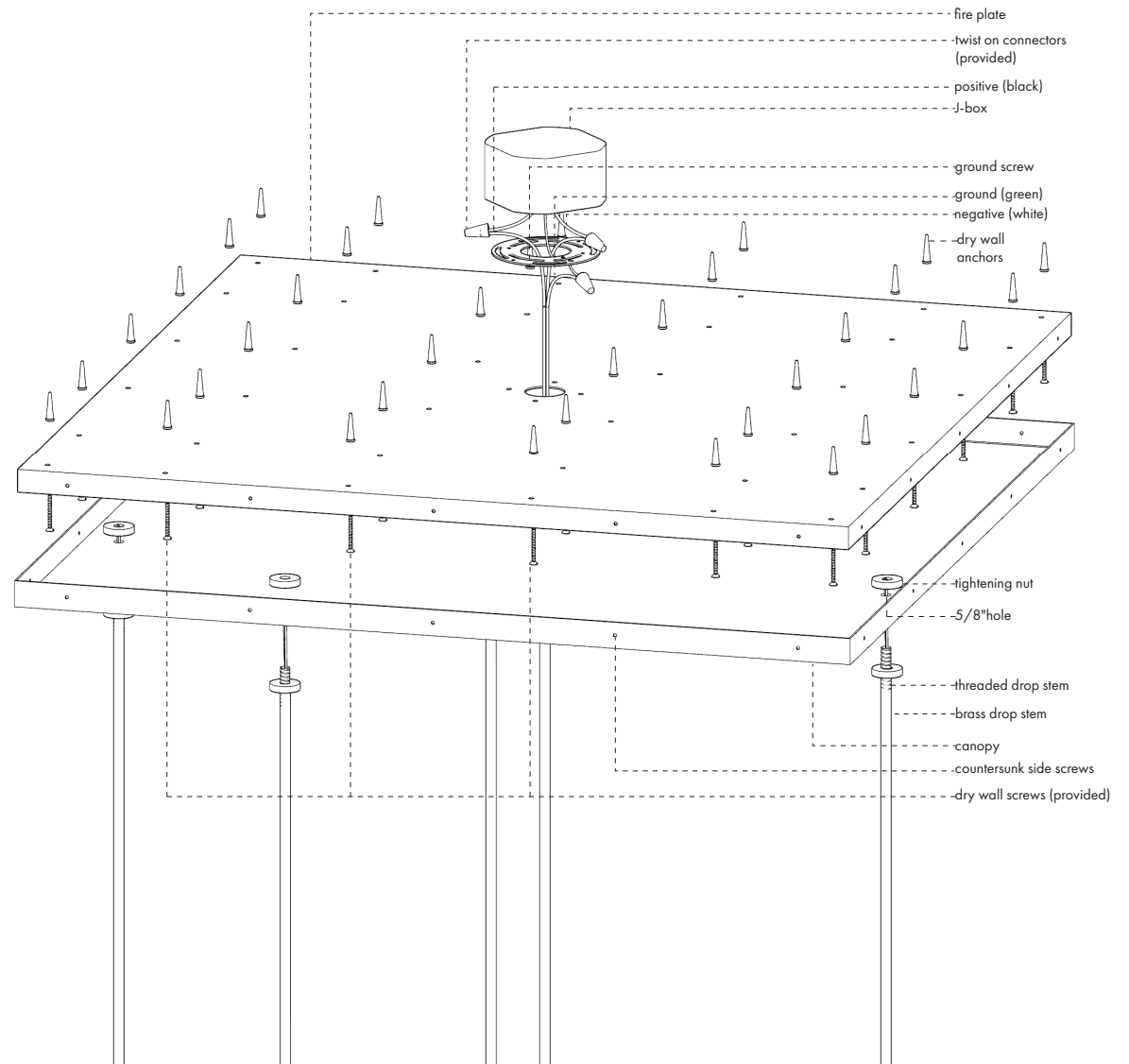
Grounding Instructions

For positive grounding in a 3-wire electrical system, fasten the fixture ground wire (typically copper or green plastic coated) to the fixture mounting crossbar with the ground screw.

Note: On straps for screw support fixtures, first install the two mounting screws in strap. Any remaining tapped hole may be used for the ground screw.

Light Bulb Replacement

1. Unscrew glass tightening screws from glass tightening cap.
2. With the help of another person, slide glass cubes inside brass frame to reveal LED bulb.
3. Remove bulb by gently pulling it from socket and replace.
4. Slide glass cube back in place fitting against cap.
5. Use tightening screws to secure glass cube in place.



It's recommended to use a soft cloth or gloves when handling the fixture.

Assembly Instructions

1. Loosen set screws to remove detachable frame.
2. Slide glass shades over bulbs and sockets.
3. Using provided screws fasten glass to tightening cap.
4. Place detachable frames back into holes at tightening cap. Secure with set screw.
5. Secure fixture connectors at intersections where pendant frames meet perpendicularly.

Light Bulb Replacement

1. Unscrew glass tightening screws from glass tightening cap.
2. With the help of another person, slide glass cubes inside frame to reveal LED bulb.
3. Remove bulb by gently pulling it from socket and replace.
4. Slide glass cube back in place fitting against cap.
5. Use tightening screws to secure glass cube in place.

