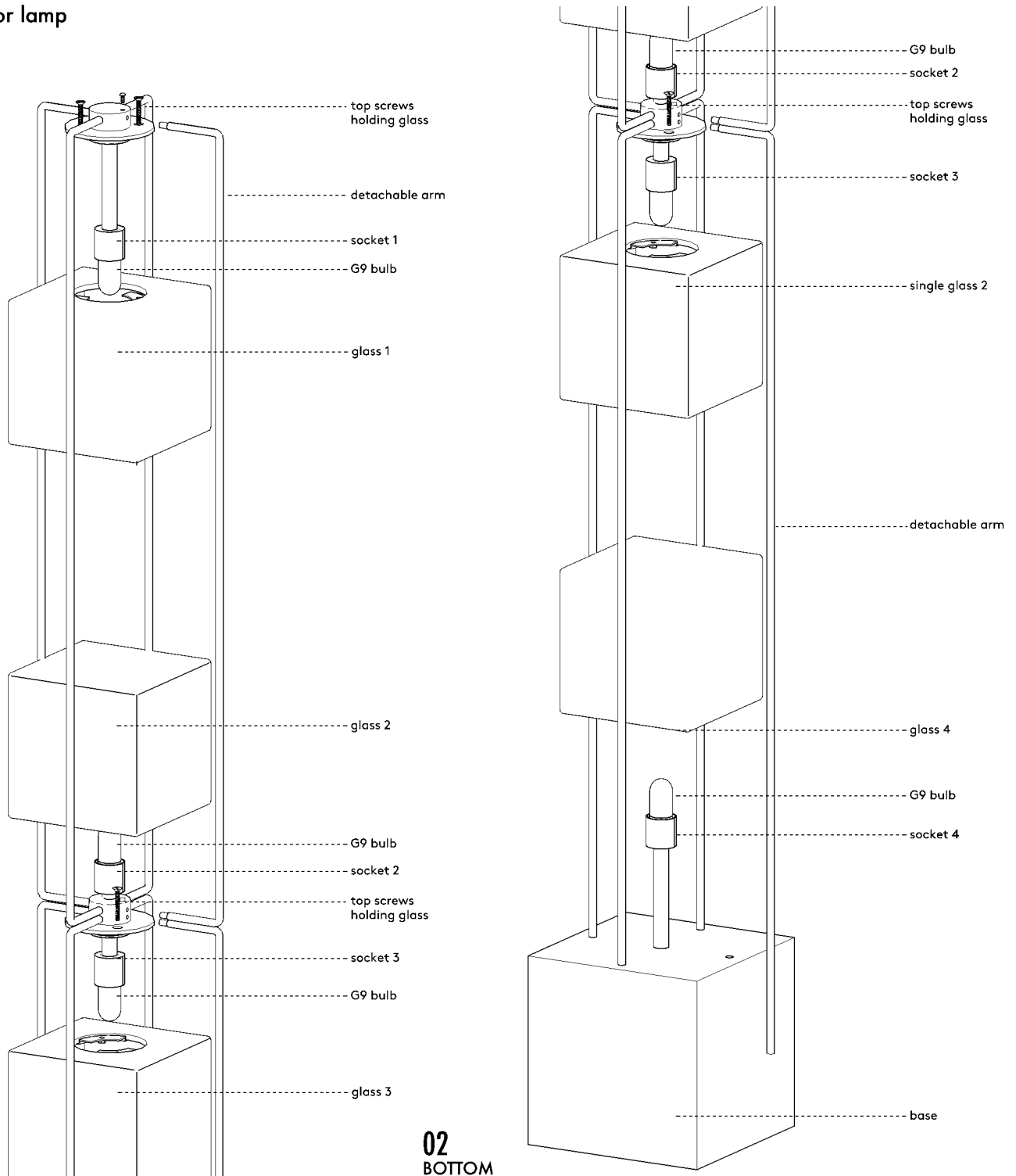


ALICE small floor lamp



01
TOP

02
BOTTOM

ASSEMBLY

It is recommended to use a soft cloth or gloves when handling this fixture. Unpack and set glass on a smooth protected surface to avoid scratching.

Unscrew set screw holding detachable arm, set aside.

BOTTOM

Gently push bulb into socket 4.
Place single glass 4 over socket.

MIDDLE

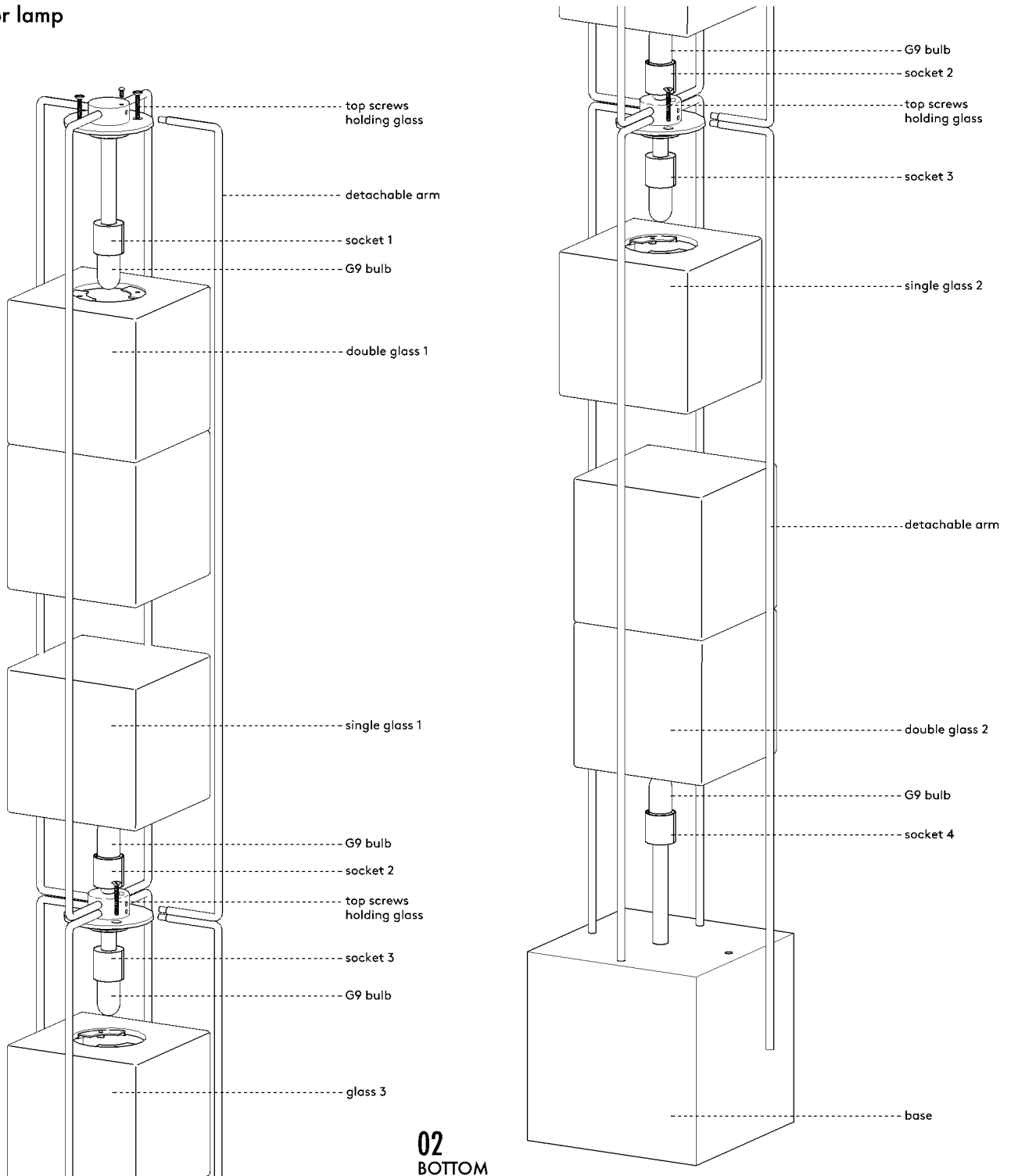
Gently push bulbs into sockets 2 + 3.
Hold single glass 3 over socket 3 and secure top screws.
Rest middle glass over socket 2.

TOP

Gently push bulb into socket 1.
Hold glass 1 against socket 1 and secure top screws.

Fit detachable arm into appropriate holes.
Secure set screw into top cluster to hold in place.

ALICE large floor lamp



ASSEMBLY

It is recommended to use a soft cloth or gloves when handling this fixture. Unpack and set glass on a smooth protected surface to avoid scratching.

Unscrew set screw holding detachable arm, set aside.

BOTTOM

Gently push bulb into socket 4.
Place double glass 2 over socket.

MIDDLE

Gently push bulbs into sockets 2 + 3.
Hold single glass 2 over socket 3 and secure top screws.
Rest middle glass over socket 2.

TOP

Gently push bulb into socket 1.
Hold double glass 1 against socket 1 and secure top screws.

Fit detachable arm into appropriate holes.
Secure set screw into top cluster to hold in place.