



ATELIER DE TROUPE

TRANSATLANTIQUE

(FRENCH LINES)

WITH

ANTHONY GUERRÉE,

RUGS

PRODUCED

BY

CC TAPIS

ALCOVA 24 AT VILLA BORSANI

PUBLIC EXHIBITION (11AM - 7PM)

APRIL 15TH 2024 –
APRIL 20TH 2024

FOR PRESS INQUIRIES:

COURTNEY@ATELIERDETROUPE.COM
1 (917) 409 3186

PHOTOGRAPHY BY:

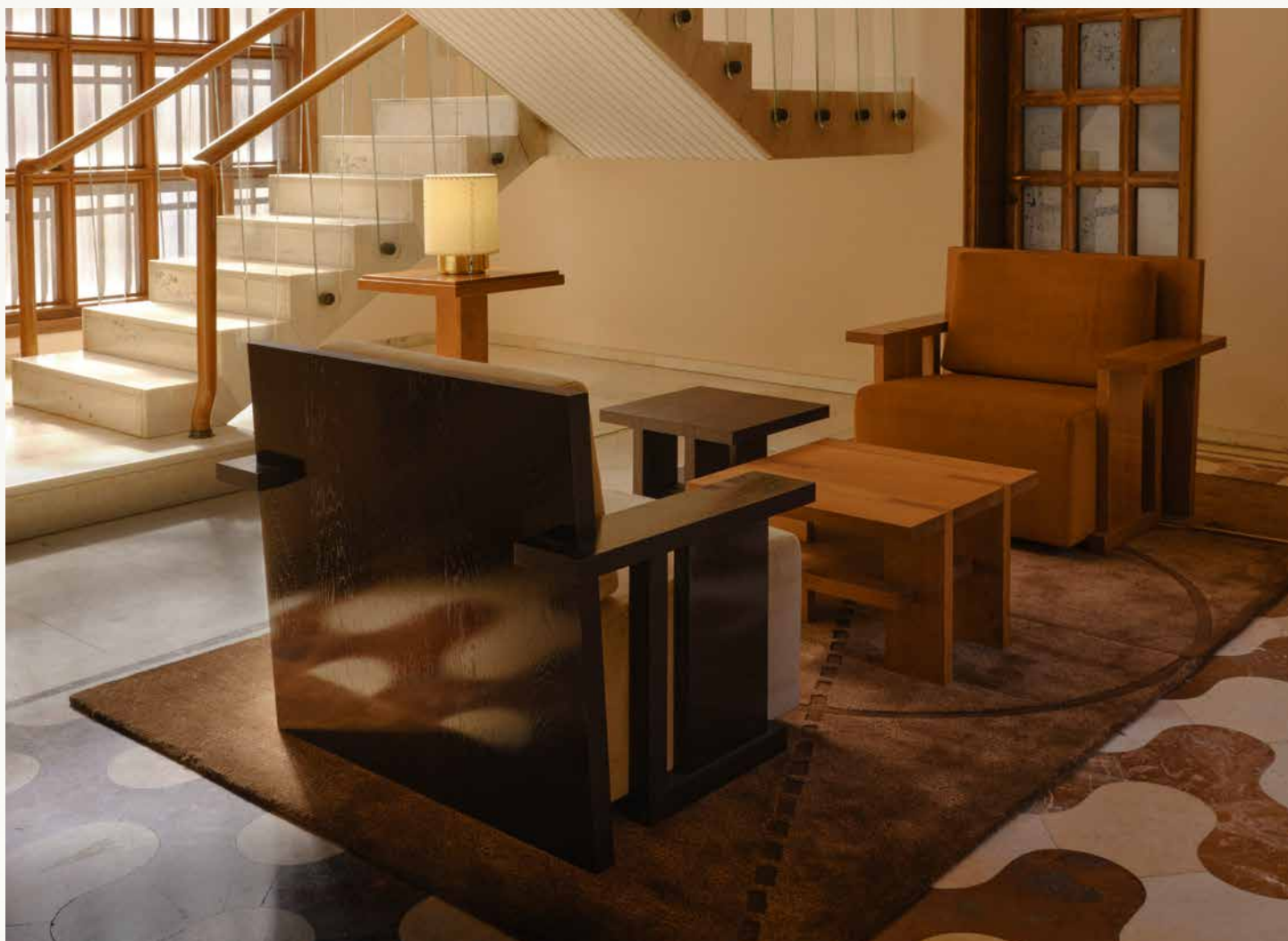
GUILIO GHIRARDI

This year's introduction is a nod to the theme of Voyage. Anthony Guerrée's TRANSATLANTIQUE collection for Atelier de Troupe refers to the French Ocean Liners of the early 20th century and the golden age of the Streamline Moderne movement; popularized by the Transatlantic company that linked France to New York. Every interior was thoughtfully curated in the style of the French Decorative Arts, laying the groundwork for Art Deco Design.



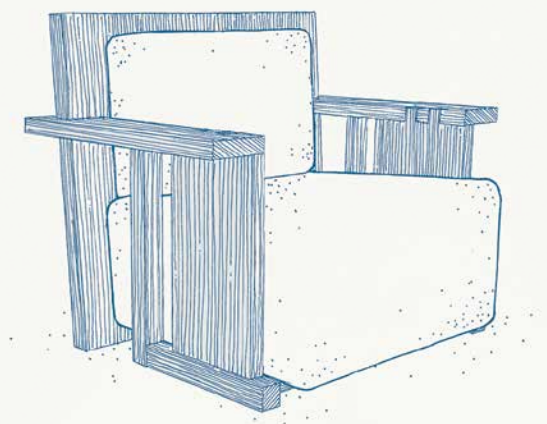
Each piece of furniture in this collection is a study in Art Deco Design and the Streamline Moderne style of the most famous ship of the fleet, the SS Normandie, with its clean and radical designs and luxurious finishes. exchange maintained with Guerrée's French studio and the US-based, Atelier de Troupe.

Following the success of the NOMADE rug, the AMERIQUE and EUGENIE rugs produced by cc-tapis in Milan and designed by Anthony Guerrée pay homage to shipbuilding and the important role of geometry and the golden ratio in their patterns as in all creation in general. An ode to movement and ocean travel.









ALEXANDRE ARMCHAIR

W 98.0 cm

D 76.7cm

H 79.4cm



LAFAYETTE SIDE TABLE

W 42.9cm

D 42.9cm

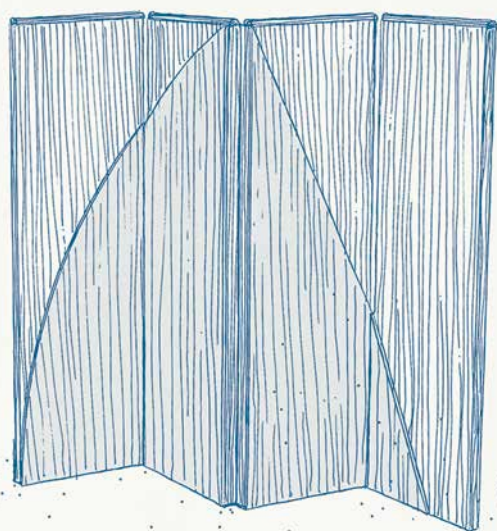
H 45.1cm

LAFAYETTE COFFEE TABLE

W 57.2 cm

D 57.2 cm

H 38.4 cm

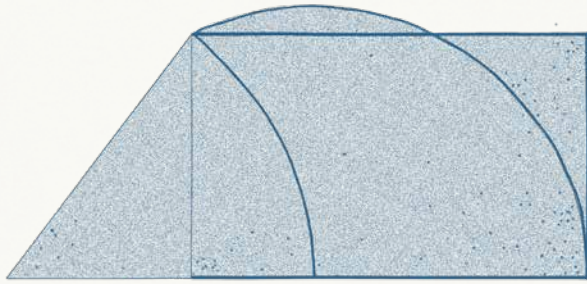


ATLANTIQUE SCREEN

W 136.7cm

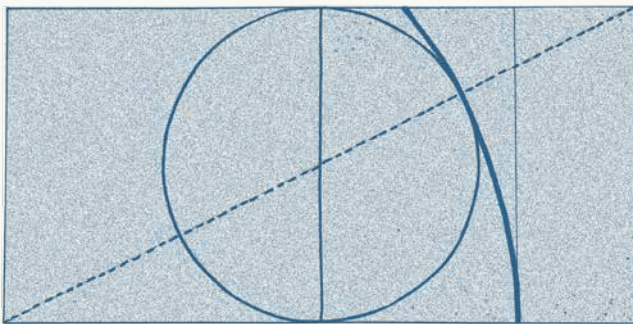
D 42.0 cm

H 64.9 cm



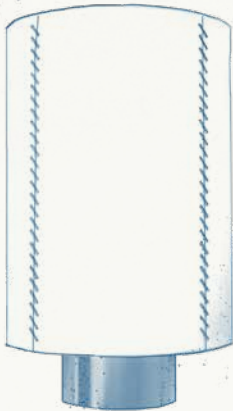
AMERIQUE RUG

L 300cm
W 141cm



EUGENIE RUG

L 350cm
W 175cm



PEDREGAL SCONCE

W 40.6cm
H 71.1cm
D 12.7cm



PEDREGAL TABLE LAMP

W 22.9cm
H 31.2cm







Atelier de Troupe
@ATELIERDETROUPE

Atelier de Troupe, led by swiss born Gabriel Abraham, is a niche lighting and furniture brand inspired by Modernism, Art Deco, and cinema, taking a narrative approach to its collections.

All of Atelier's products are designed with a firm belief in lasting quality and a focus on natural materials. Each piece is made with exquisite craftsmanship by experienced manufacturers in Los Angeles.

COLLABORATORS

Anthony Guerrée
@ANTHONY_GUERREE

Anthony Guerrée is a French designer, born in Normandy in 1987. He lives and works in Paris. As a designer, he has always worked closely with artisans, exploring high-quality craftsmanships and the history of French decorative arts. Each product of Anthony Guerrée is functional with a bold, sculptural form and meticulous detailing.

Anthony Guerrée graduated from the ÉCOLE BOULLE in Paris, where since its foundation in 1886 young talents are schooled in the fine and applied arts, and where craftsmanship plays a central role. Fascinated by the interior designers of the '30s, Anthony joined STUDIO ANDRÉE PUTMAN, in 2010, where he was able to work with the best 'makers' in the world in shaping world-class interiors. In 2015, Anthony went to work for designer Christophe Delcourt, assisting him in designing his DELCOURT COLLECTION furniture, as well as contributing to Christophe's collaborations with French and international brands. In 2020, Anthony Guerrée ventured out on his own and developed a unique signature, inspired by his travels, personal interactions and literary encounters.

cc Tapis
@CC_TAPIS

cc-tapis is an Italian rug maker which produces contemporary hand-made rugs.

The company was founded by Nelcya Chamszadeh and Fabrizio Cantoni in France who have been producing hand-knotted rugs in Nepal for over 20 years. In 2011 cc-tapis moved to Milan where the company is now based where a team of designers lead by Daniele Lora, art-director and partner, innovate through a new approach to traditional methods.

A strong respect for the materials and for the culture of this ancient craft is reflected in the company's eco-friendly approach to every step of production, ranging from the hand spinning of the softest materials to the use of purified rainwater for the washing of the final products, making each one of cc-tapis rugs unique.

Far from mass production, cc-tapis aims to offer a tailored service to those who understand and enjoy a high-end product which contains the story of an ageless culture.



ATELIER DE TROUPE

TRANSATLANTIQUE

(FRENCH LINES)

WITH

ANTHONY GUERRÉE,

RUGS

PRODUCED

BY

CC TAPIS